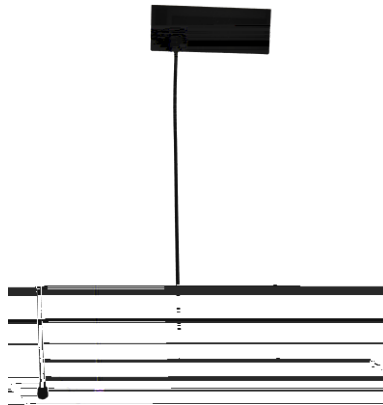
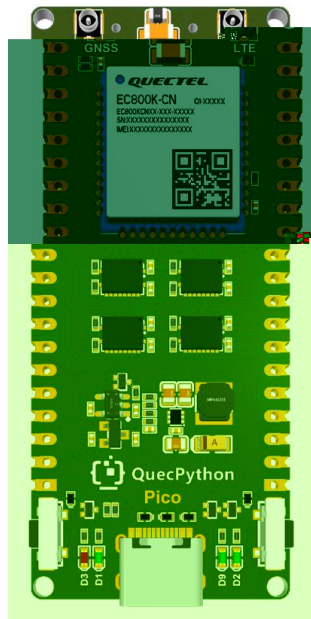


EC800X Pico



1



-
-
-
-
-
-
-

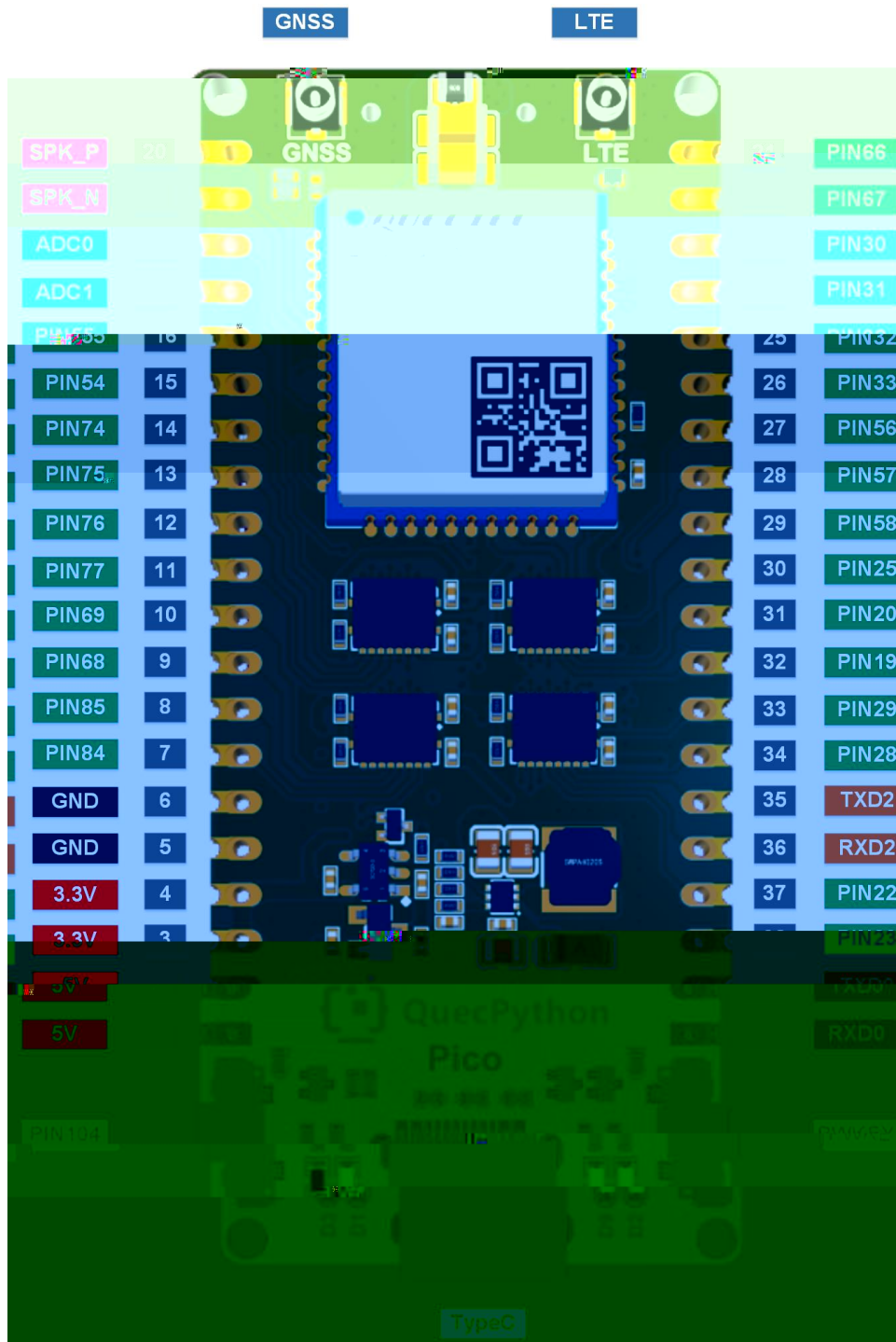
%

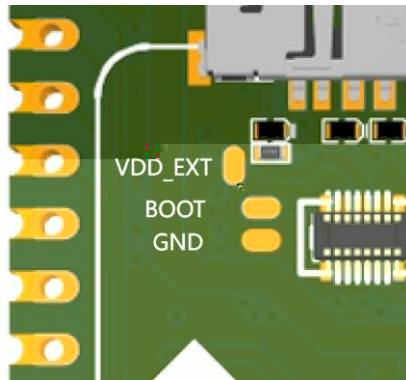
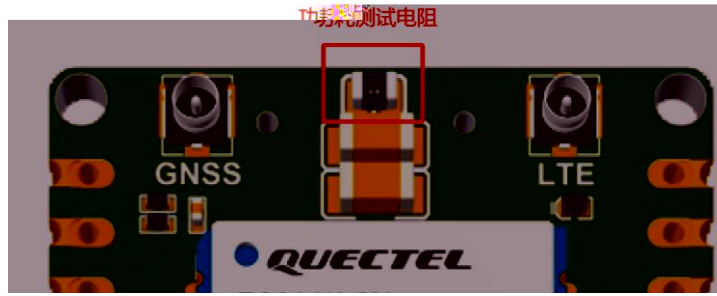
%

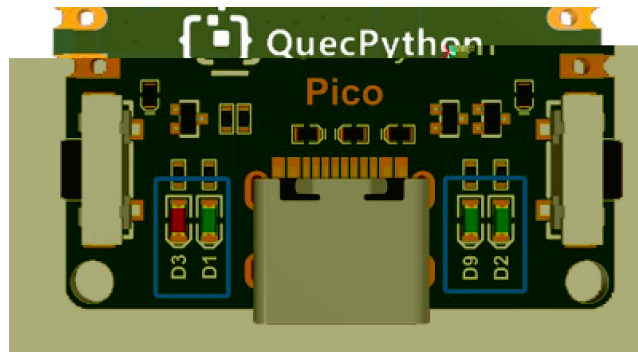
%

%

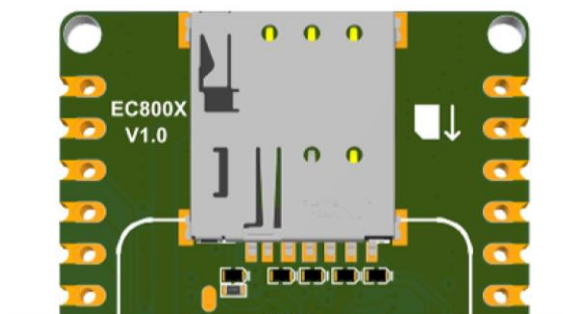
•
•
2





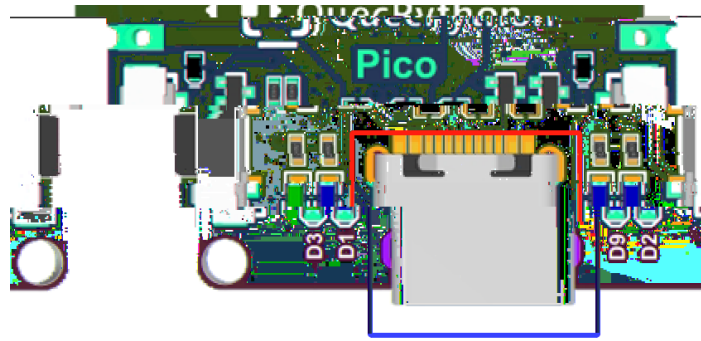


3 SIM



% %

4 USB



%

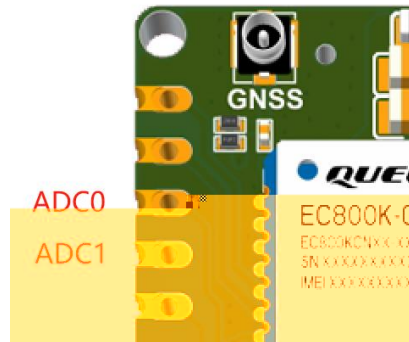
%

5 SPK



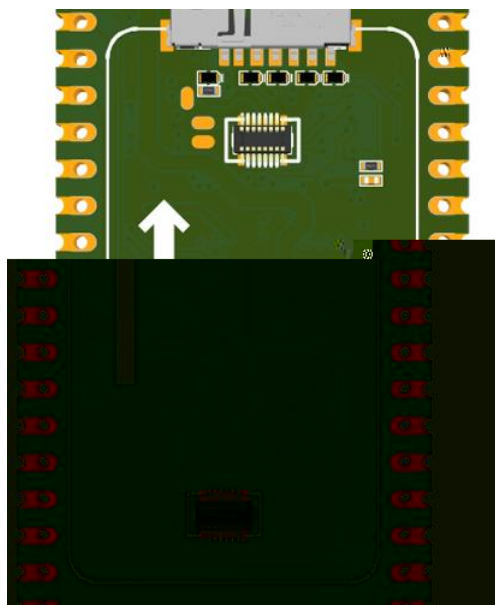
-
-

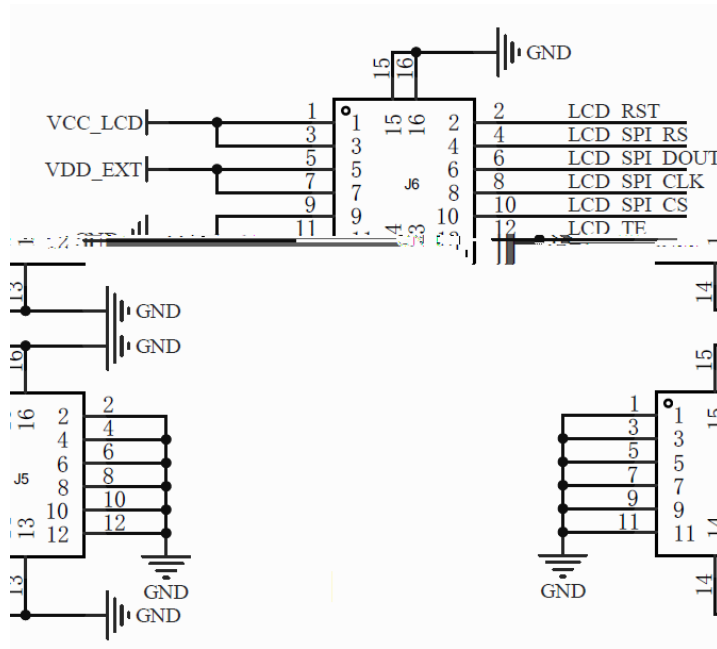
6 ADC



参数	最小值	典型值	最大值	单位
ADC0 电压	0	-	1.2	V
ADC1 电压	0	-	1.2	V
ADC 分辨率	-	-	12	位

7 LCD





%

-

NO.	Item	Contents	Unit
1	LCD Size	1.47	inch
2	Display Mode	Normally black	-
3	Resolution	172(H)RGB x320(V)	pixels
4	Pixel pitch	0.0337(H) x 0.1011(V)	mm
5	Active area	17.3892(H) x 32.352(V)	mm
6	Module size	19.00(H) x 30.00(V) x 1.46(D)	mm
7	Pixel arrangement	RGB Vertical stripe	
8	Interface	4 Line SPI	
9	Display Colors	262K	
10	Drive IC	ST7789V3	
11	Luminance(cd/m2)	350 (TYP)	
12	Viewing Direction	All View	
13	Backlight	3 White LED Parallel	
14	Operating Temp.	-20°C~+70°C	
15	Storage Temp.	-30°C~+80°C	
16	Weight	2.7	g

8

引脚名	引脚号	I/O	描述	备注
ANT_MAIN	35	AIO	主天线接口	50 Ω 特性阻抗。

备注

模块支持 Wi-Fi Scan 功能。由于共用主天线接口，两种功能不可同时使用，时分复用，Wi-Fi Scan 只接收不发送。

工作频段	发送 (MHz)	接收 (MHz)	频点
0~2170	LTE-FDD B1	1920~1980	211
5~1880	LTE-FDD B3	1710~1785	180
~894	LTE-FDD B5	824~849	869
~960	LTE-FDD B8	880~915	925
0~2025	LTE-TDD B34	2010~2025	201
0~2620	LTE-TDD B38	2570~2620	257
0~1920	LTE-TDD B39	1880~1920	188
0~2400	LTE-TDD B40	2300~2400	230
5~2675	LTE-TDD B41	2535~2675	253

频段	最大值	最小值
LTE-FDD-B1/B3/B5/B8	23 dBm ± 2 dB	< -39 dBm
LTE-TDD-B34/B38/B39/B40/B41	23 dBm ± 2 dB	< -39 dBm

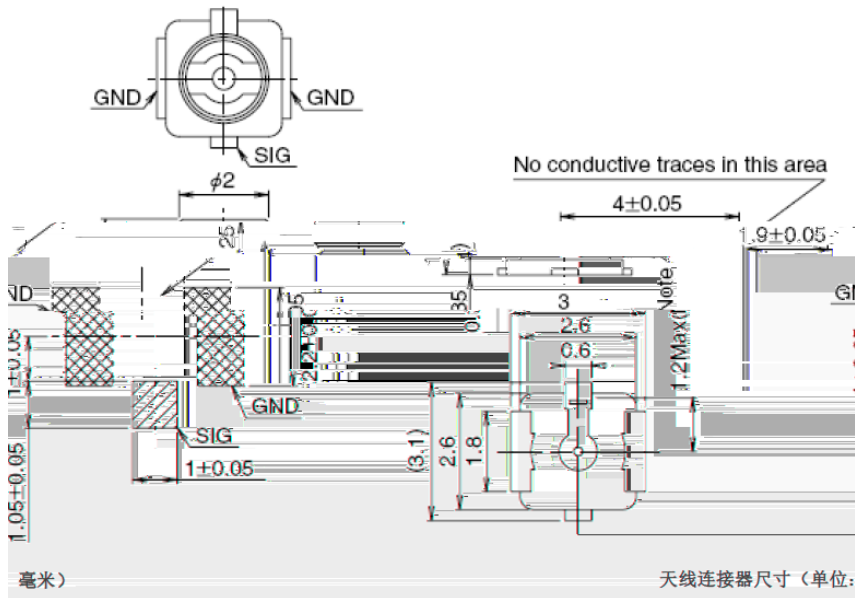
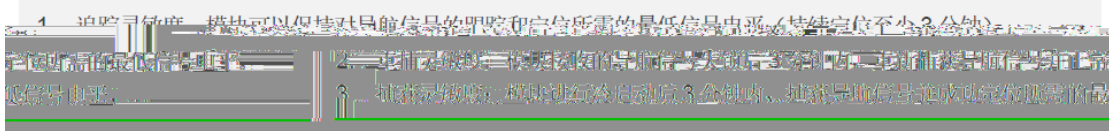
频段	接收灵敏度（典型值）（dBm）			3GPP 要求 （主集 + 分集）
	主集	分集	主集 + 分集	
LTE-FDD B1 (10 MHz)	-99.5 dBm	-	-	-96.3 dBm
LTE-FDD B3 (10 MHz)	-99.0 dBm	-	-	-93.3 dBm
LTE-FDD B5 (10 MHz)	-98.5 dBm	-	-	-94.3 dBm
LTE-FDD B8 (10 MHz)	-99.0 dBm	-	-	-93.3 dBm
LTE-TDD B34 (10 MHz)	-100.0 dBm	-	-	-96.3 dBm
LTE-TDD B38 (10 MHz)	-99.0 dBm	-	-	-96.3 dBm
LTE-TDD B39 (10 MHz)	-100.0 dBm	-	-	-96.3 dBm
LTE-TDD B40 (10 MHz)	-100.5 dBm	-	-	-96.3 dBm
LTE-TDD B41 (10 MHz)	-99.0 dBm	-	-	-94.3 dBm

-
-
-

	%	%
	%	%
	%	%
	%	%

参数	条件	典型值	单位
灵敏度	捕获	-146	dBm
	重捕	-160	
	追踪	-160	
首次定位时间	冷启动 @ 空旷区域	28	s
	温启动 @ 空旷区域	27	
	热启动 @ 空旷区域	3.7	

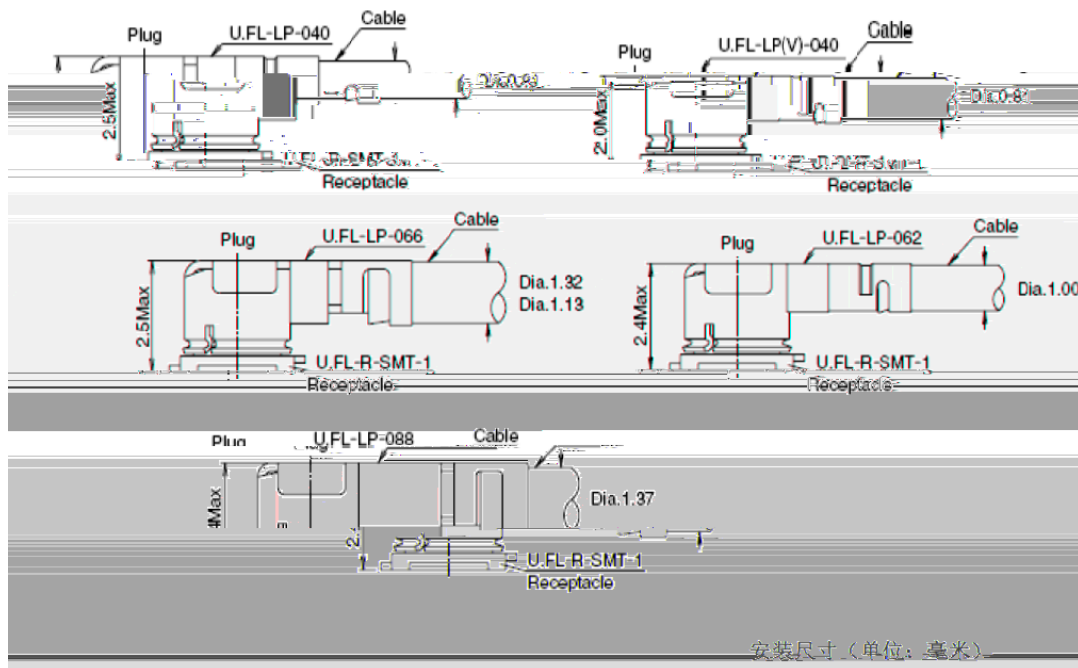
备注



% -

	U.FL-LP-040	U.FL-LP-066	Part No.	U.FL-LP-040	U.FL-LP-066	U.FL-LP-088
Max. height (mm.)	2.4mm Max. (2.3mm Nom.)	2.4mm Max. (2.3mm Nom.)		2.5mm Max. (2.4mm Nom.)	2.5mm Max. (2.4mm Nom.)	2.0mm Max. (1.9mm Nom.)
Max. cable diameter	Dia. 1.13mm Coaxial cable	Dia. 1.27mm Coaxial cable	Applicable	Dia. 1.32mm and 1.13mm Coaxial cable	Dia. 1.32mm and 1.13mm Coaxial cable	Dia. 1.00mm Coaxial cable
Weight (mg)	34.8	45.5	74.7	53.7	53.7	53.7
RoHS	YES					

U.FL-LP 连接线系列

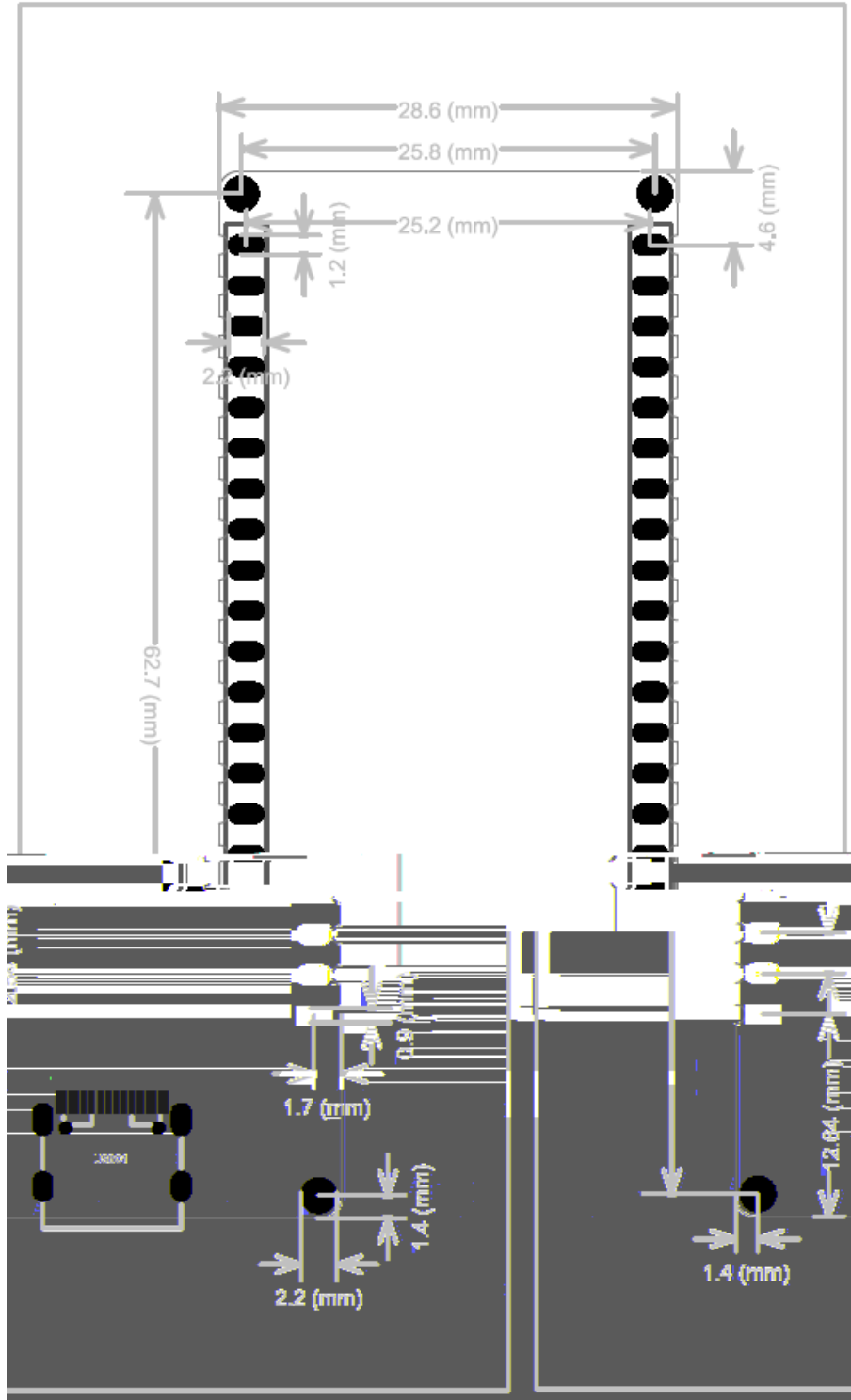


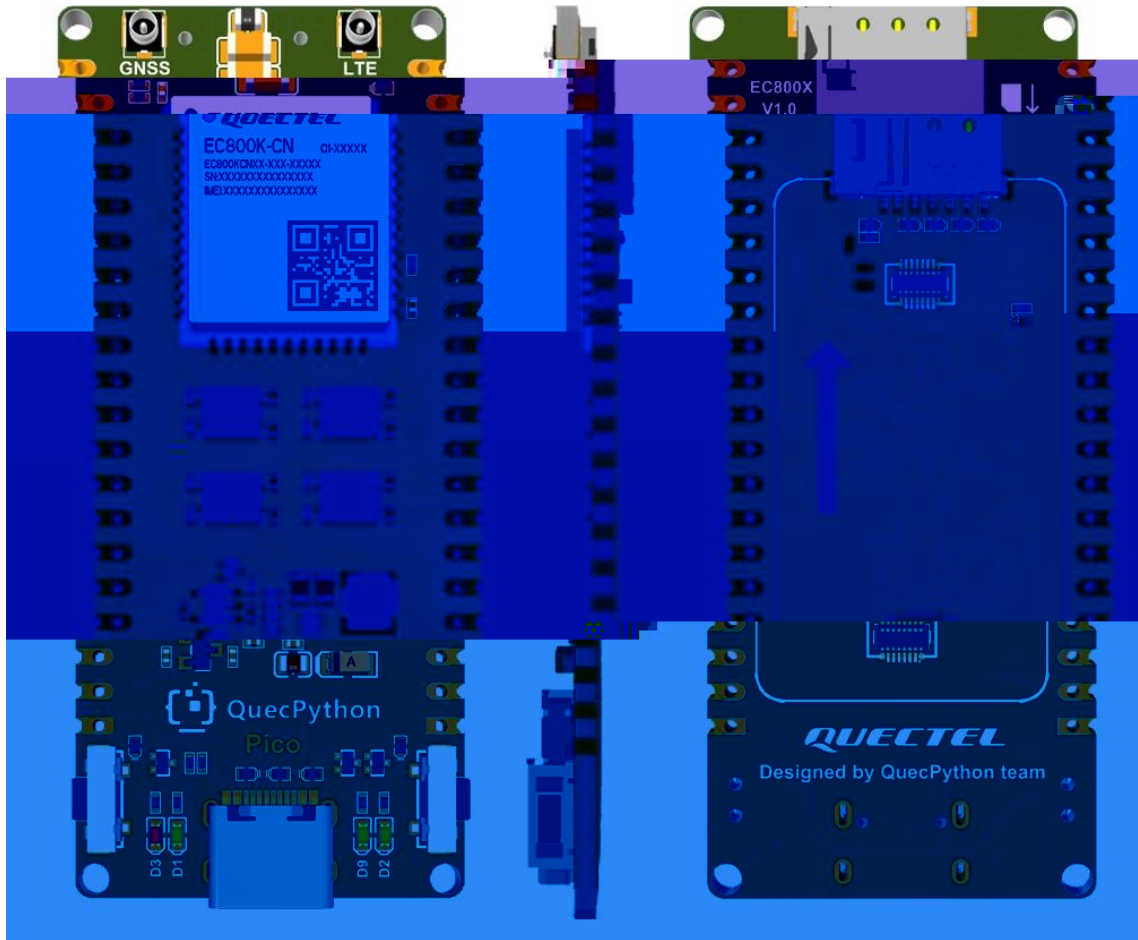
% %

9

	- %		
%	- %	%	
	- %	%	
	-	%	
	-	%	
	-		

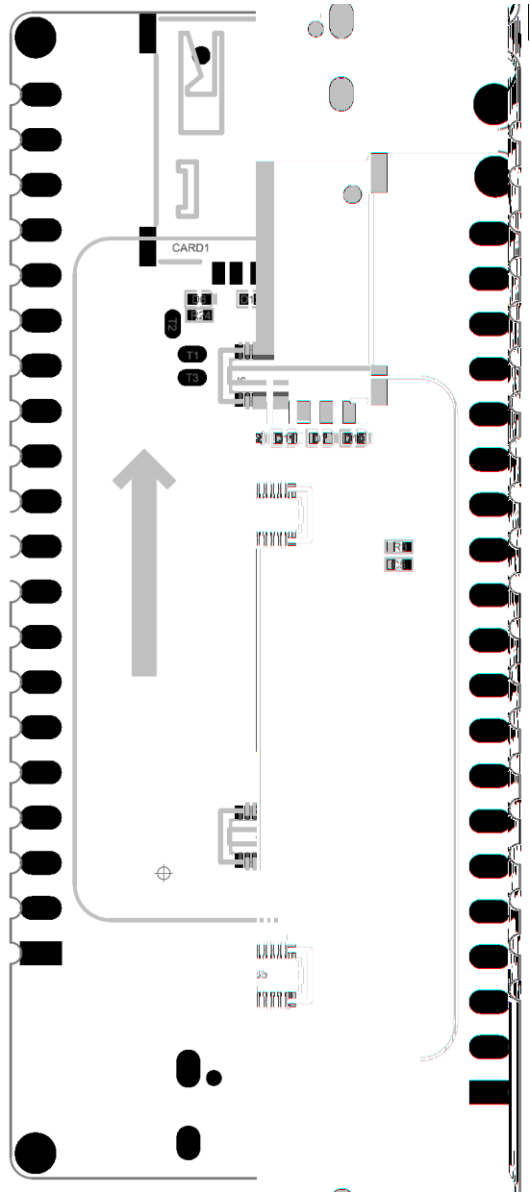
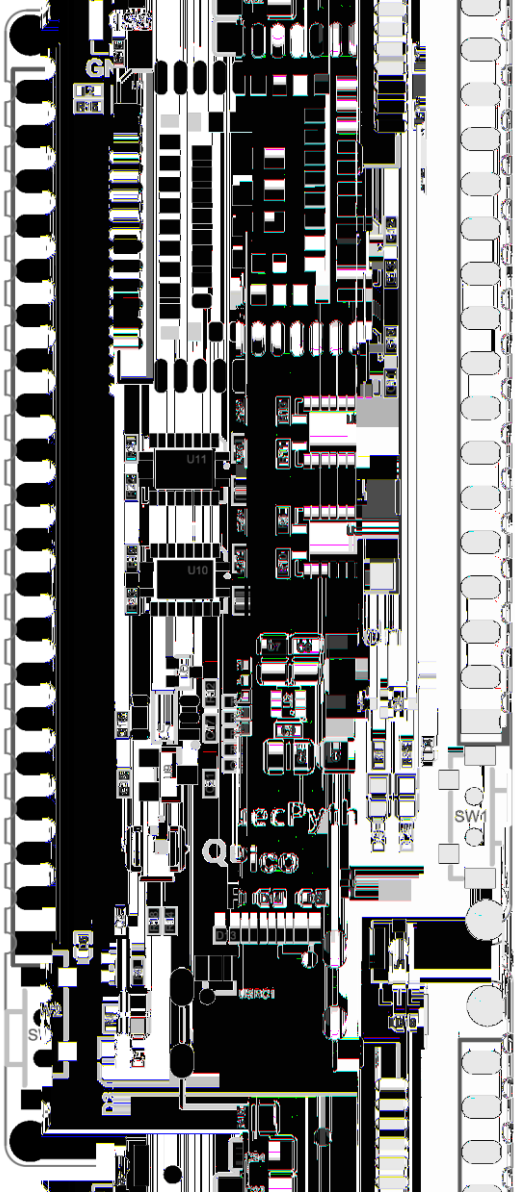
		%	%	%	
		%	%	%	
		-	%		

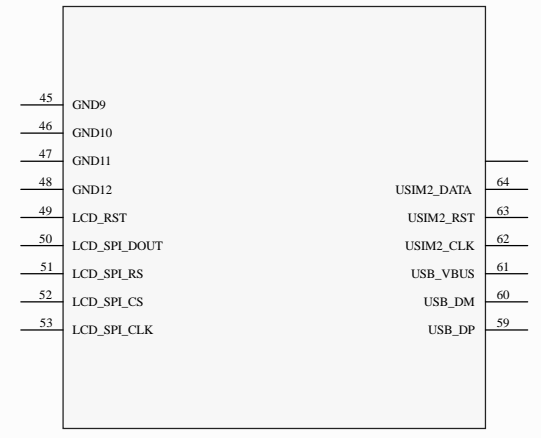
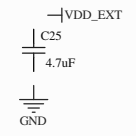
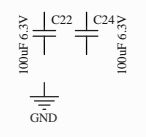
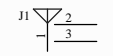
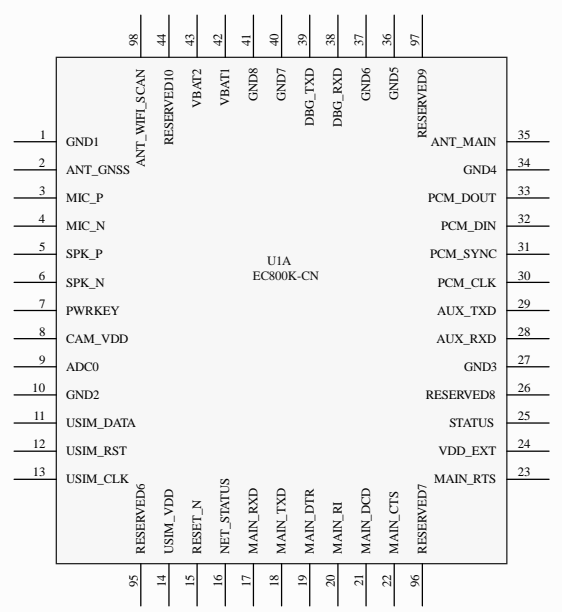




11

12





G9098.49 18T6.8997 0 0 6.8997 644.5939 387.6552 T6 10.7407 0 Td0.006 T6C_1Tj.8519 0 Td8.10.4815 0 TdV.10.7037 0 Td6.1Tj 1 1 @.1491 J0.76149 RGETI J0.7615 ml.21.1

A

B

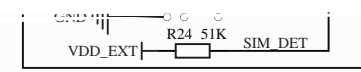
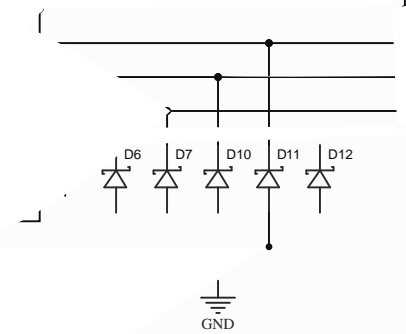
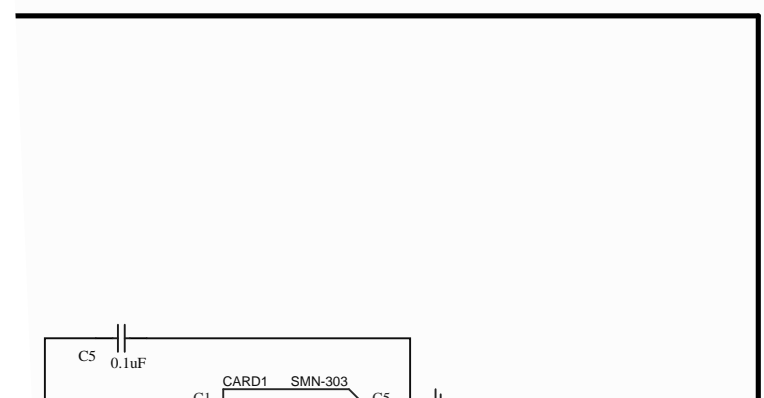
4

5

6

A

B



C

USIM

D

1

2

3

4

5

6